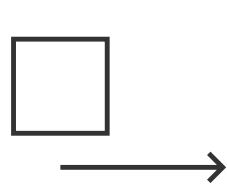
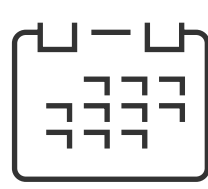
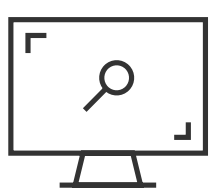
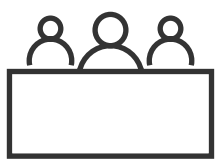
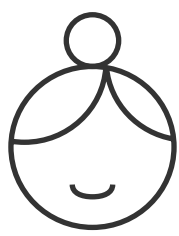


# Rendering - Reception Space



The reception space is designed to help the library serve its users. This is a vibrant, welcoming space that blends community with learning and connection. The resource desk and kiosks help support seamless use of the library, while artwork energizes the space and helps one reflect the culture of Duluth. The reception space has artwork by Michael Birawer, Adam Swanson, and Pen King. This space sets the tone for a building that has elements of both local identity and personal expression.

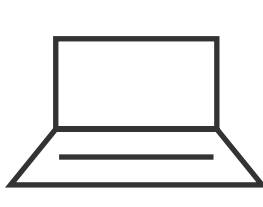
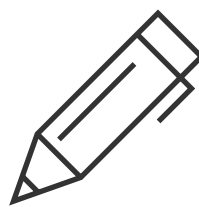
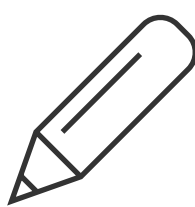


Great workers, digital resources, self checkout, library events, and wayfinding elements are all found in the reception space.

# Elevation - Makerspace



This is an elevation of the back wall of the Makerspace. The Makerspace serves the community through many hands-on resources, celebrating both creativity and innovation in one space. This space features a row of photographs captured by Dawn Parendo, with some iconic views of Duluth. This imagery reflects the spirit of exploration and imagination that helps define the makerspace. People of all ages are invited to tinker, build, and learn by doing. This space is also special to me because of Stout's focus on hands-on learning. This space is built for hands on learning, from the ground up.



The Makerspace helps you access the tools you need to create.